



Cyper

Cyper LED Street Light has a smooth and slender design, making it more suitable for urban applications. Professional optical lenses provide excellent lighting performance, managing glare while ensuring high levels of visibility.

Made of Aluminum Alloy.



Slim design

Key features

- Easy installation
- High output lumen efficiency up to 140lm/W
- The housing is made of 100% aluminum alloy (ADC12)
- AKZO powder coating
- Easy maintenance
- 315° adjustable

Applications

- Parking lots
- Traffic routes
- Residential areas
- Plazas

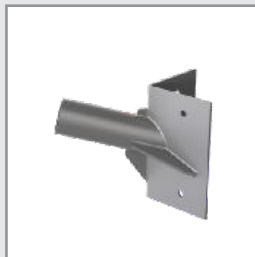
Accessories



Pole mount spigot
Made from ADC12 aluminum alloy, with ±15° tilt adjustment, suitable for Ø60 mm poles.



Wall mount adapter
Q235+SPCC materials with hot dip galvanizing.



Corner mount adapter
SPCC materials with hot dip galvanizing.



T shape pole mount adapter
Constructed from Q235 steel with hot-dip galvanizing, suitable for Ø60 mm poles.



Shorting cap
Cover NEMA socket when the photocell is not used.



Photocell control
Automatic ON-OFF according to daylight.



NEMA socket
3pin/ 5pin /7pin are optional.

Technical Data @4000K

Model No.	CY-PER 040	CY-PER 055	CY-PER 075	CY-PER 100	CY-PER 120	CY-PER 150	CY-PER 180
Power Consumption (±5%)	40W	55W	75W	100W	120W	150W	180W
Input Voltage	220-240 VAC , 50 / 60 Hz						
Power Factor	>0.94						
Control	Dimmable, photocell, microwave sensor is optional						

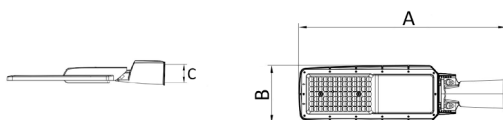
Optic Information

LED Type	LED 2835						
Luminous Flux (±10%)	5600	7700	10500	14000	16800	21000	25200
Efficacy(4000K Ra70)	140lm/W						
Correlated Color Temperature	4000K (3000K, 5000K optional)						
Color Rendering Index	Ra70 (Ra80 optional)						
Beam Angle	R09002	R16903		R23003			

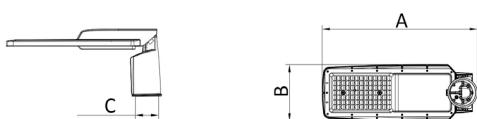
Dimensions and Mounting @Side entry

Type	A (mm)	B (mm)	C (mm)
CYPER Side Entry 40W/55W	523	146	82
CYPER Side Entry 75W/100W/120W	629	174	82
CYPER Side Entry 150W/180W	724	194	82
CYPER Post Top 40W/55W	409	146	Ø61
CYPER Post Top 75W/100W/120W	515	174	Ø61
CYPER Post Top 150W/180W	610	194	Ø61

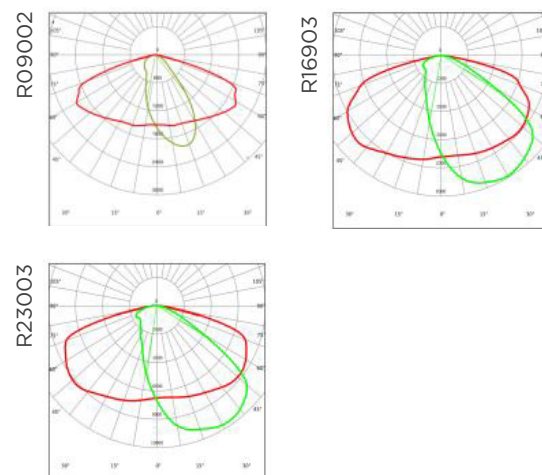
Side Entry



Post Top



Photometry



Lifespan and Warranty

Operating Temperature	-30°C to + 50°C
Lifetime of LED	82.000hrs-L80
Warranty	5 Years

