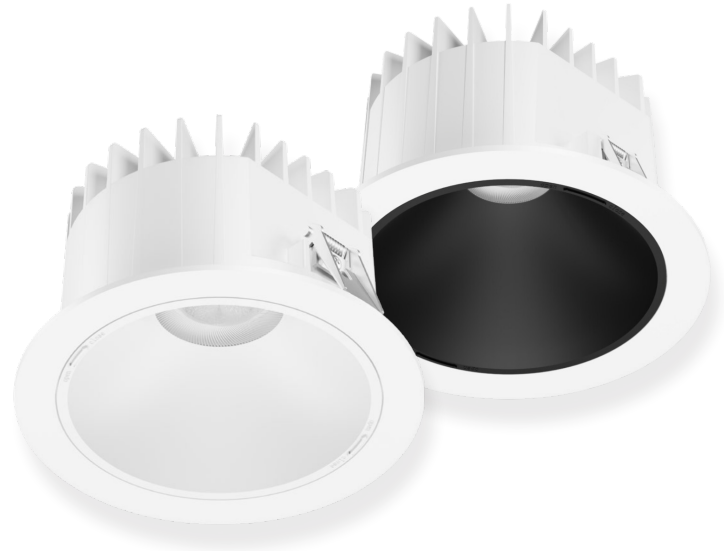




# Bari New LED

The Bari New LED is a modern downlight luminaire with high lighting performance, thanks to its advanced COB LED module technology, making it a versatile choice for various settings.



## Technical Data

<b>Model No.</b>	BARI NEW LED
<b>Power Consumption</b>	6W, 9W, 13, 18W, 26W, 33W, 40W
<b>Power Supply</b>	ON/OFF, DALI
<b>Input Voltage</b>	AC220 - 240V
<b>Power Factor</b>	0.96
<b>LED Driver</b>	Included

## Dimensions and Mounting

<b>Product Dimension</b>	75x100mm, 90x150mm, 112x185mm	
<b>Luminaire Net Weight</b>	0.19kg	
<b>Mounting Option</b>	Recessed	
<b>Material</b>	Aluminum	
<b>Finish Color</b>	White RAL 9016	
<b>Reflector</b>	Metallic, White, Blck	
<b>Protection Class</b>	Class 2	
<b>IP Rating</b>	Cover IP54	Other parts IP20
<b>IK Rating</b>	IK06	

## Key features

- Customizable ring in any RAL color
- Powder-painted white aluminum body
- Driver located outside the luminaire
- Easy installation into plasterboard and modular ceilings

## Applications

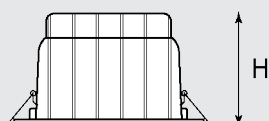
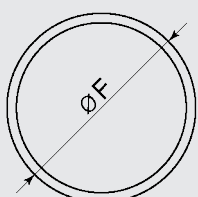
- Office
- Hotels
- Restaurants
- Halls
- Shopping malls

## Optic Information

<b>LED Type</b>	COB
<b>Luminous Flux</b>	680lm - 4025lm
<b>Correlated Color Temperature</b>	3000K / 4000K
<b>Color Rendering Index</b>	Ra80

## Lifespan and Warranty

<b>Operating Temperature</b>	0°C to 35°C
<b>Lifetime of LED</b>	60.000hrs-L90 B10
<b>Warranty</b>	3 Years



H:75mm x F:100mm  
H:90mm x F:140mm  
H:122mm x F:185mm