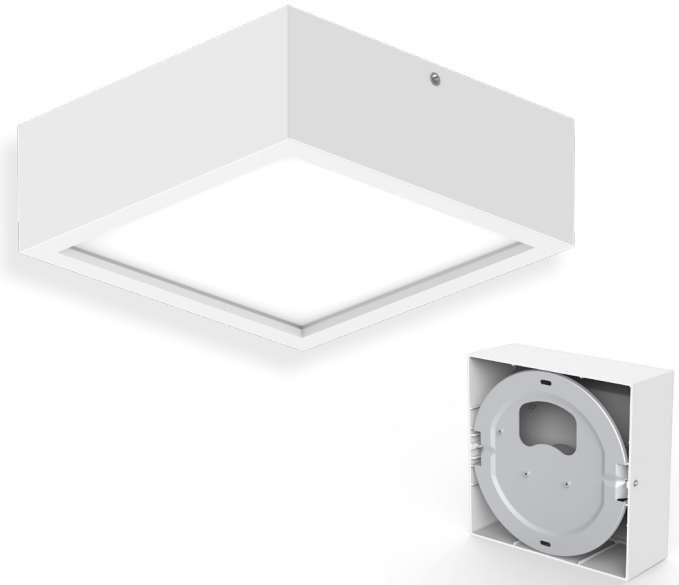




# Divo

DIVO is a sleek surface-mounted ceiling light designed for efficient, uniform illumination. Equipped with SMD LED chips and a PC diffuser for glare-free light distribution. The ADC12 aluminum housing provides excellent thermal management and long-lasting durability. Available in dimmable and non-dimmable versions with an isolated driver for stable performance.



## Technical Data

<b>Model No.</b>	DIVO-8	DIVO-15
<b>Power Consumption</b>	8W	15W
<b>Input Voltage</b>	AC200 - 240V	
<b>Power Factor</b>	0.9	
<b>LED Driver</b>	Included	
<b>Dimmable</b>	Non-dimmable	

## Dimensions and Mounting

<b>Product Dimension (mm)</b>	Ø100x100x59mm	Ø150x150x59mm
<b>Luminaire Net Weight</b>	0.35kg	0.57kg
<b>Mounting Option</b>	Surface mount	
<b>Material</b>	Aluminum Alloy (ADC12)	
<b>Finish Color</b>	White RAL 9016	
<b>Protection Class</b>	Class 2	
<b>IP Rating</b>	IP54	

## Key features

- Super slim design
- Up to 70% energy saving compared to standard CFL
- IP54 front waterproof
- 90° wide beam angle

## Applications

- Office
- Stairway
- Lobby
- Reception
- Corridors

## Optic Information

<b>LED Type</b>	SMD	
<b>Luminous Flux</b>	600-696lm	1215-1365lm
<b>Correlated Color Temperature</b>	3000K	
<b>Color Rendering Index</b>	Ra80	
<b>Beam Angle</b>	90°	

## Lifespan and Warranty

<b>Operating Temperature</b>	-20°C to 45°C
<b>Storage Temperature</b>	-20°C to 65°C
<b>Lifetime of LED</b>	40.000hrs
<b>Warranty</b>	3 Years

