



# Atra

Atra is a new super slim design ceiling light, adopting high lumen SMD LED and lighter weight fire-rated material to ensure better heat resistance and corrosion resistance. The base and cover are detachable which make easier maintenance and installation.



## Technical Data

<b>Model No.</b>	ATRA-14-25W
<b>Power Consumption</b>	25W
<b>Input Voltage</b>	AC200 - 240V
<b>Power Factor</b>	0.9
<b>Control</b>	Triac / 0-10V / DALI

## Key features

- High lumen efficiency
- Interchangeable CCT with slide switch
- IP54 , IK08
- Interchangeable power by slide switch
- Internal driver

## Applications

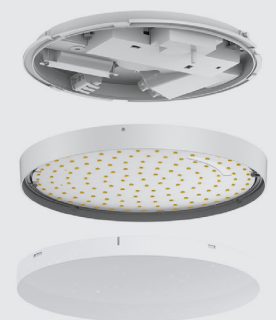
- Office
- Supermarket
- Shop
- School
- Hotel
- Stairway
- Lobby

## Optic Information

<b>LED Type</b>	SMD
<b>Luminous Flux</b>	2400 - 2800lm
<b>Correlated Color Temperature</b>	3-CCT: 3000K + 4000K + 5700K
<b>Color Rendering Index</b>	Ra80
<b>Beam Angle</b>	120°

## Dimensions and Mounting

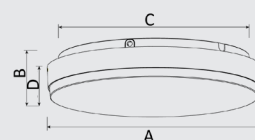
<b>Product Dimension</b>	Ø350x65mm
<b>Luminaire Net Weight</b>	1kg
<b>Mounting Option</b>	Surface mounted
<b>Material</b>	Polypropylene (PP)
<b>Finish Color</b>	White RAL 9016
<b>Protection Class</b>	Class 2
<b>IP Rating</b>	IP54
<b>IK Rating</b>	IK08



## Lifespan and Warranty

<b>Operating Temperature</b>	-20°C to 45°C
<b>Storage Temperature</b>	-20°C to 65°C
<b>Lifetime of LED</b>	50.000hrs-L80
<b>Warranty</b>	5 Years

## Dimensions



Type	A (mm)	B (mm)	C (mm)	D (mm)
ATRA-14-25W	350	65	320	51