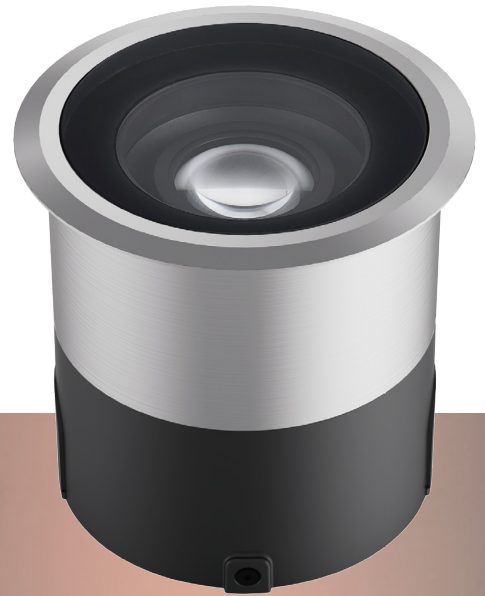
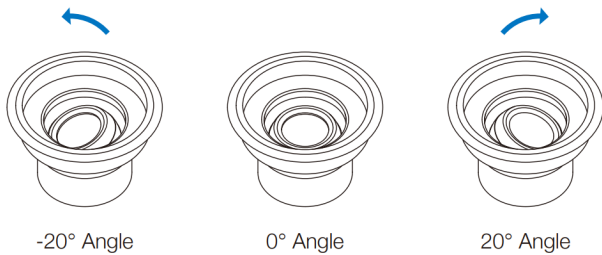




Tilto

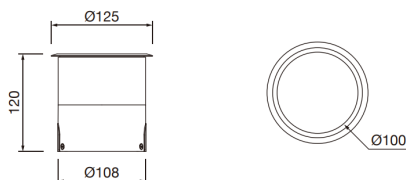
Featuring a purpose-built optical design, this luminaire delivers optimal visual comfort by minimizing glare and reducing light pollution. Its adjustable light direction allows precise illumination tailored to the needs of each environment.



Key features

- Stainless steel type 304 body and installation housing, Pure aluminium construction fixture body
- The 15 mm clear tempered glass enables the luminaire to withstand a static load of up to 5000 kg
- The lighting module has tilt adjustable system, with high performance optics
- Snap-in installation with no exposed hardware, allowing continuous runs in standard lengths
- Supplied with oil- and water-resistant components, ensuring safe and reliable operation
- The maximum surface temperature of all touchable parts remains below 50°C, ensuring safety and reliability
- All external screws are made of 304 stainless steel
- The luminaire technical characteristics conform to EN 60598-1 standards

Dimensions



Technical Data

Code	Power	Lumen	Control Options	Input Voltage	Optics	Weight
Tilto-LED-10	10W	800lm	Switch	DC 24V	30°	9.8

