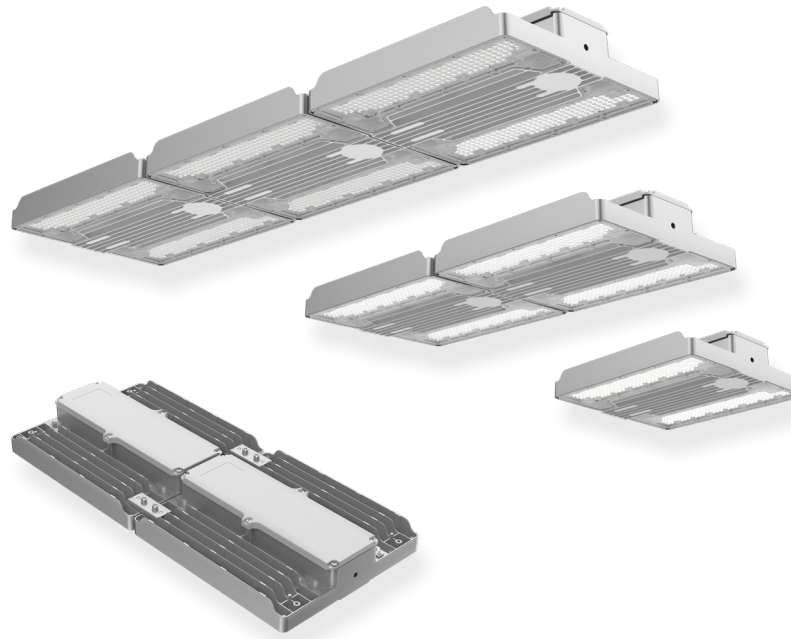




Zigando+

ZIGANDO is a compact and cost-effective LED linear high bay light, designed for efficient performance in industrial and commercial spaces. Its optimized heat sink structure ensures excellent thermal management, while the modular design with one driver per module allows for fast assembly and scalable power configurations. Built from durable aluminum alloy and equipped with an optional intelligent control mode, ZIGANDO delivers reliable, long-lasting illumination with minimal maintenance.



Key features

- Various accessories available
- IP65/IK08
- Power selectable
- Modular assembly
- Ceiling mount and suspension mount
- Smart control all in one, including PIR, Microwave motion sensor

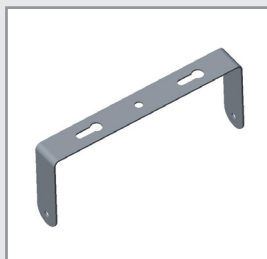
Applications

- Warehouse
- Factory
- Industrial facility
- Exhibition centers
- Stadiums
- Toll stations

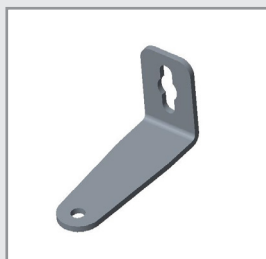
Accessories



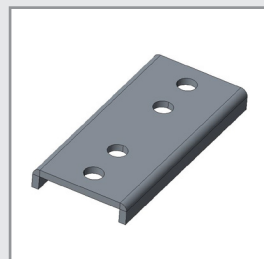
Safety line



Mount bracket
(For 100W/150W)



Mount bracket (All)



Modular Assembly (For
200W/300W/450W)



PIR motion sensor



Microwave motion sensor



Sensor receptacle



Optic lens

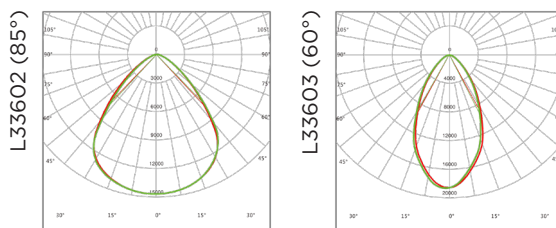
Technical Data @5000k

| | | | | | |
|--------------------------------|---|-------------|-------------|-------------|-------------|
| Model No. | ZIGANDO 100 | ZIGANDO 150 | ZIGANDO 200 | ZIGANDO 300 | ZIGANDO 450 |
| Power Consumption (±5%) | 100W | 150W | 200W | 300W | 450W |
| Input Voltage | 120-277 VAC, 50/60 Hz | | | | |
| Power Factor | >0.92 | | | | |
| Surge Protection | 6kV line-line, 10kV line-earth | | | | |
| Control | 1-10V dimmable / 0-10V dimmable / Microwave sensor / PIR sensor | | | | |

Optic Information

| | | | | | |
|-------------------------------------|-------------------------------|---------|---------|---------|---------|
| LED Type | LED 2835 | | | | |
| Luminous Flux (±10%) | 17000lm | 25500lm | 34000lm | 51000lm | 76500lm |
| Efficacy (5000K Ra70) | 170lm/W | | | | |
| Correlated Color Temperature | 5000K (3000K, 4000K optional) | | | | |
| Color Rendering Index | Ra70 (Ra80 optional) | | | | |
| Beam Angle | L33602, L33603 | | | | |

Photometry

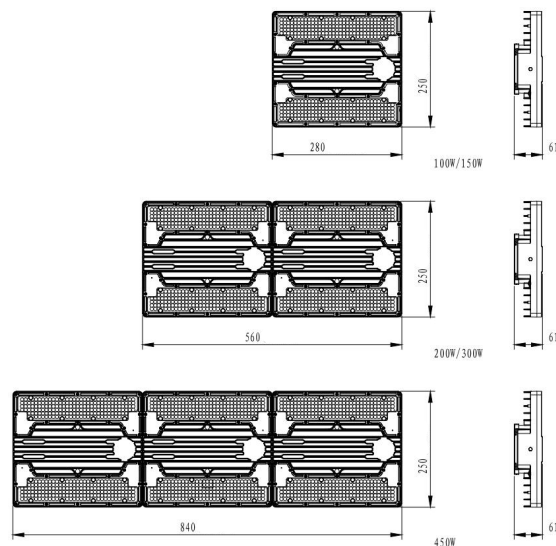


Lifespan and Warranty

| | |
|------------------------------|-----------------|
| Operating Temperature | -30°C to + 50°C |
| Lifetime of LED | 107.000hrs-L80 |
| Warranty | 5 Years |

Dimensions and Mounting

| | | | | | |
|-----------------------------|--|--------------|--------------|-----|-------|
| Product Dimension | 280x250x61mm | 560x250x61mm | 840x250x61mm | | |
| Luminaire Net Weight | 2.4kg | 2.6kg | 4.7kg | 5kg | 7.8kg |
| Mounting Option | Suspension mounting, Ceiling mounting | | | | |
| Material | Aluminum Alloy, Polycarbonate Optical Lens | | | | |
| Finish | Powder Coating | | | | |
| Fixture Color | Grey (RAL9006) | | | | |
| IK Rating | IK08 | | | | |
| IP Rating | IP65 | | | | |



Mounting Option

