



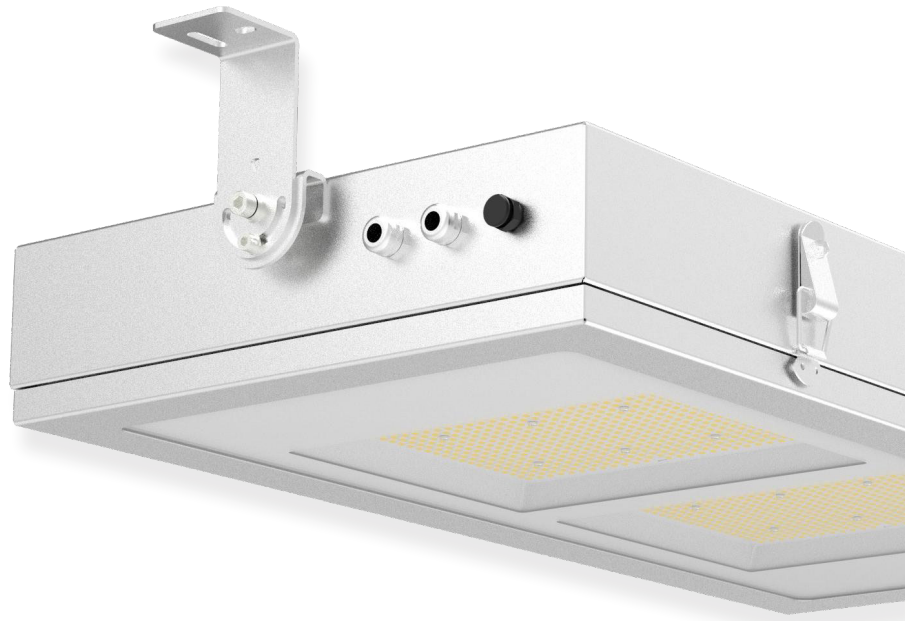
# Atila

The ATILA luminaire is a robust, high-efficacy LED designed for industrial and tunnel environments. Its anticorrosion stainless steel (INOX 316L) housing and tempered glass provide high impact protection.

With a unique mechanical and optical design, it minimizes glare while maximizing lumen output. Developed and assembled in Slovenia, it features an anticorrosive LED source for high reliability, including redundant power and surge protectors.

This ensures low maintenance costs even post-warranty.

The design also enables quick maintenance, allowing the light engine to be replaced in just 2 minutes without tools.



Note: Product design may be adjusted according to later optimization.

## Key features

- Directly substitute to 400W HPS
- Control interface ready2mains, DALI2 DT6, DSI
- 155lm/W (@ 4000K / Ra>80)
- IK09, IP66 Rated
- Smart Lighting Ready
- 5 years warranty

## Applications

- Tunnels
- Underpasses
- Industrial Halls
- Warehouses



## Technical Data @5000K

<b>Model No.</b>	ATILA 100	ATILA 200
<b>Power Consumption (±5%)</b>	100W	200W
<b>Output current</b>	500 mA	500 mA
<b>Luminaire luminous flux</b>	15.000 lm	31.000 lm
<b>Rated supply voltage</b>	220-240V	
<b>AC voltage range</b>	198 - 264V	
<b>DC voltage range</b>	176 - 280V	
<b>Mains frequency</b>	0/ 50/60Hz	
<b>Typ. efficiency</b>	(at 230V , 50Hz, full load): 100%, λ (at 230V, 50Hz, full load): 0,97	
<b>Starting Time (AC/DC)</b>	<750ms/<800ms	
<b>Turn off time</b>	<500ms	
<b>Dimming range</b>	1% - 100%	
<b>Supported control signals</b>	ready2mains, chronoSTEP 2, DALI2, DSI, corridorFUNCTION	
<b>Supported parameterization signals</b>	ready2mains (interface needed), DALI2 (DALI USB needed), NFC (NFC antenna needed)	
<b>Surge protection device (SPD) 20kV</b>		

## Optic Information

<b>LED Type</b>	Nichia LEDs
<b>Efficacy(4000K Ra70)</b>	Up to 155lm/W
<b>Correlated Color Temperature</b>	3000K, 4000K

## Lifespan and Warranty

<b>Operating Temperature</b>	-30°C to + 50°C
<b>Lifetime of LED</b>	100.000h - L90 B10
<b>Warranty</b>	5 Years

## Dimensions

<b>Model</b>	ATILA 100	ATILA 200
<b>Product Dimension</b>	A 515mm x  B 425mm x  C 155mm	A 885mm x  B 425mm x  C 155mm
<b>IK Rating</b>	IK09	
<b>IP Rating</b>	IP66	

