



Bello

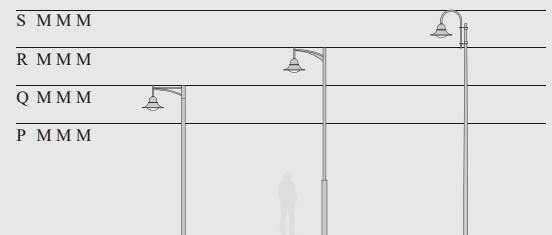
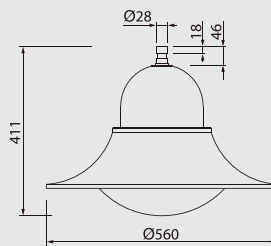
This street light features a die-cast aluminum housing, a PC lens for uniform lighting, high-quality LED chips, and 20KV surge protection. It has an anti-UV polyester coating for corrosion resistance, meets EN 62471:2008 standards, and supports smart remote management. All external screws are 304 stainless steel.



Key features

- The housing is made from die-cast aluminum, featuring a PC transparent diffuser and a chrome plastic reflector
- The optics utilize a PC lens to provide visually comfortable and uniform lighting, with multiple distribution options available
- Equipped with high-quality LED chips and a driver that supports 0-10V/DALI/programmed options, the system also includes surge protection up to 20KV
- The LED module inside is designed for easy installation and replacement
- The surface is coated with an anti-ultraviolet pure polyester powder, offering corrosion resistance exceeding 1000 hours
- It meets EN 62471:2008 standards, ensuring no photo-biological risks such as infrared, blue light, or UV radiation
- The street lighting control features smart technology compatible with remote management systems
- All external screws are made from 304 stainless steel for added durability

Dimensions



Technical Data

Code	Power	LED Qty	Optics	Weight
Bello-LED-30-12	30W	12	T1/T2A/T3/T4A	8,8
Bello-LED-40-16	40W	16	T1/T2A/T3/T4A	8,8
Bello-LED-40-16	80W	24	T1/T2A/T3/T4A	8,8
Bello-LED-75-32	75W	32	T1/T2A/T3/T4A	8,8
Bello-LED-40-42	40W	42	T1B/T2B/T3/T4B	8,8
Bello-LED-60-84	80W	84	T1B/T2B/T3/T4B	8,8



Accessories



IP68 Controller



Lifting Joint

Photometry

