



Flame

Flame is a highly cost-effective sports luminaire, combining performance with affordability. Its compact size and lightweight design make it an ideal choice for both distribution channels and project installations.

With a popular power range and multiple beam pattern options, it meets the demands of most recreational sports facilities and general area lighting applications.



Key features

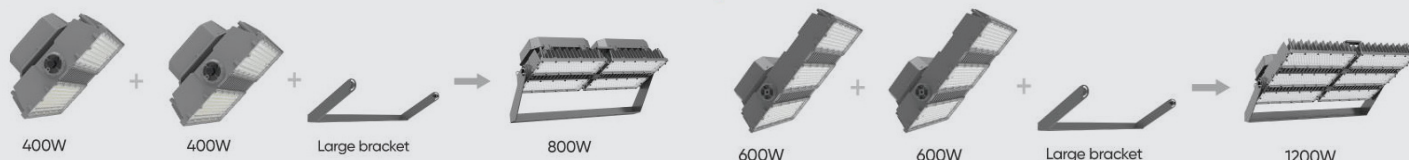
- Available in key power levels: 400W, 600W, 800W, and 1200W, delivering luminous output from 58.000 to 174.000 lm.
- Compact and lightweight construction ensures easy installation and maintenance.
- Optional symmetric and asymmetric beam distributions to suit diverse application needs.

Applications

- For recreational sports (tennis courts, basketball courts...),
- Soccer field,
- Baseball/Sotball Field lighting
- Horse Court,
- Airports, train stations, sea port

Modular

Modular configuration design allows for the flexibility in higher power and achieving fast delivery on all possible wattages.



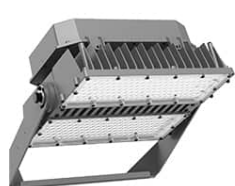
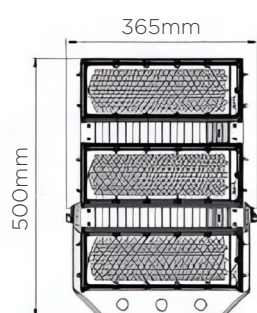
Technical Data

Model No.	FLAME 400	FLAME 600	FLAME 800	FLAME 1200
Power	400W	600W	800W	1200W
Efficacy	145lm/W			
Input Voltage	120-240 VAC, 50 / 60 Hz			
Power Factor	>0.95			
Surge Protection	6kV line-line, 10kV line-earth			
Control	0-10V Dimmable(DALI, DMX optional)			
IP Rating	IP66			
IK Rating	IK08			
CCT	3000K, 4000K, 5700K			
CRI	70			
Operating Temperature	-30°C to +50°C			
Mounting Option	Bracket Mounting			

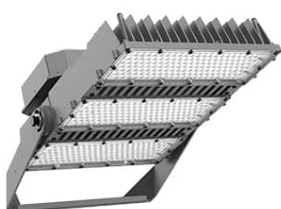
Lifespan and Warranty

Operating Temperature	-30°C to + 50°C
Warranty	5 Years

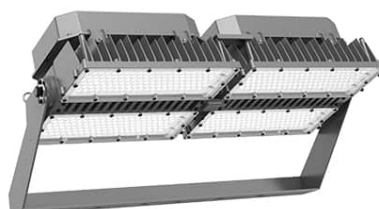
Dimensions



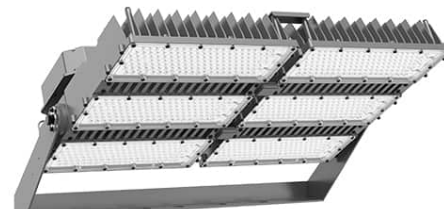
400W



600W

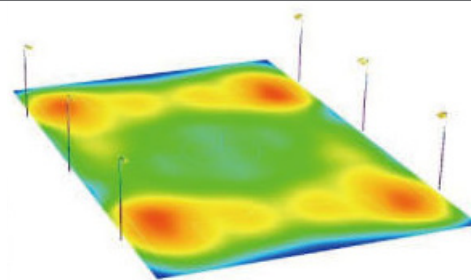


800W

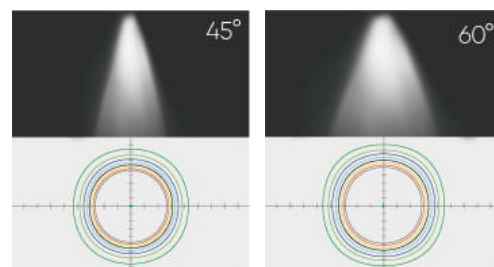
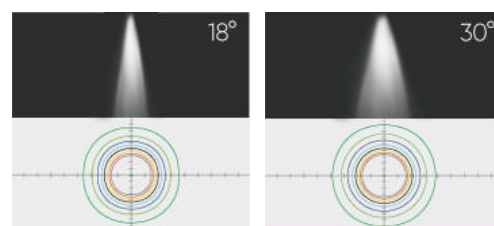


1200W

Photometry



Precise optic design, equipped with symmetric and asymmetrical beam angle.



Focusing illuminate on the intended area and minimize scatter light reaching neighboring building, providing high uniformity for sports fields and facilities.

